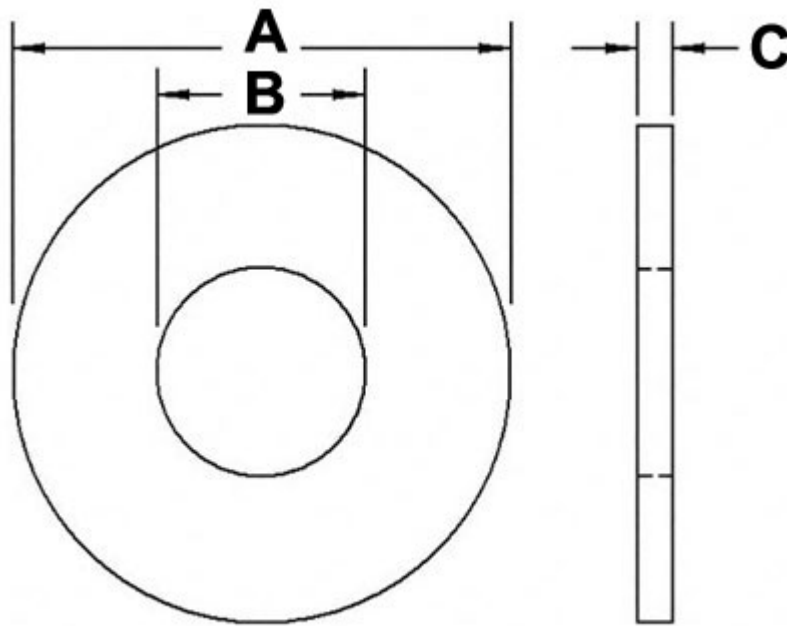


Washer



Metric Thread

For screw	B Thread diameter	C Thick	A External diameter
M3	$3 \pm 0.5\text{mm}$	0.8mm	8.00mm
M4	$4 \pm 0.5\text{mm}$	0.8mm	10.00mm
M5	$5 \pm 0.5\text{mm}$	0.8mm	12.00mm