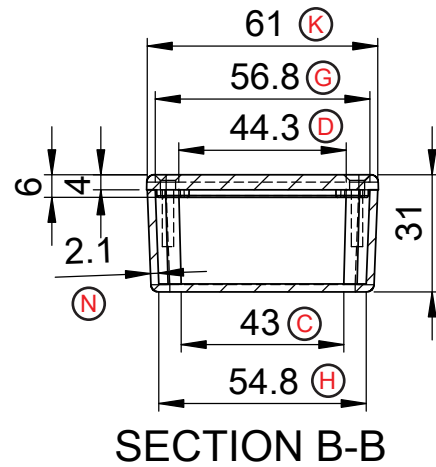
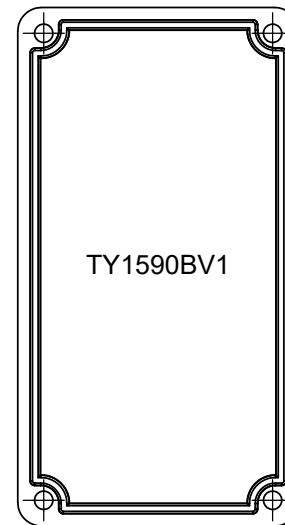
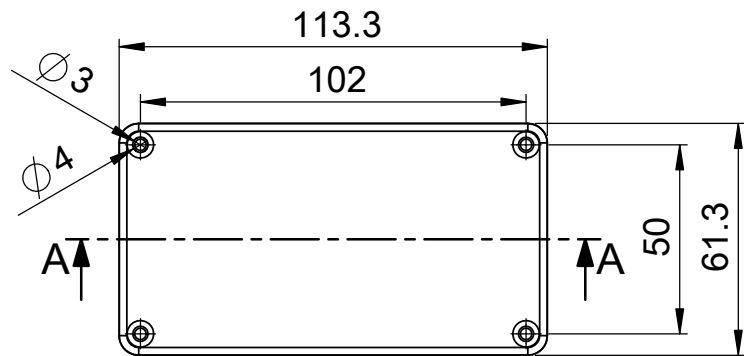
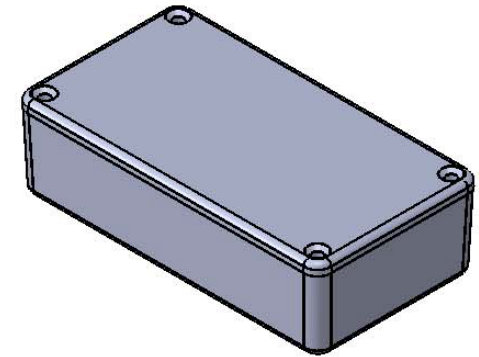


SECTION A-A



SECTION B-B



PART NO. 5158

Cover
AL mass = 77 g.
Body
AL mass = 90 g.

Note : Logo under the lid "TY1590BV1"

General Tolerance		FIRST ANGLE PROJECTION		TAYDA ELECTRONICS	
0 = ±0.50		Unit mm.	DWG NO.		REVISION
0.0 = ±0.10			DATE 26/6/2024		SHEET 1 OF 1
0.00 = ±0.02		SCALE:1:2	FILE box 5158		
Unspecified radius : R0.5			CUSTOMER		A4
Tolerance on angle ±1°					
PART NO.	PART NAME	OVERALL MEASURE	QTY	MATERIAL	HARDNESS
DESIGNED BY					
CHECKED BY					
APPROVED BY					