

CUSTOMER'S NAME

員享

ALPHA REFERENCE NO.




SP06120298

SPECIFICATION

PART NO.	ALPHA MODEL NAME
1.	RV160-20-15F-A50K

MODEL NAME
MODEL NO.

APPROVAL

PREPARED BY	REVIEWED BY	APPROVED BY
		



ALPHA

台灣艾華電子工業股份有限公司

桃園市中正路1221-1223號9樓

TAIWAN ALPHA ELECTRONIC CO., LTD.

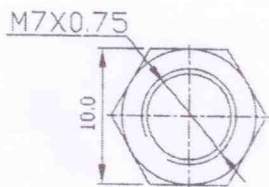
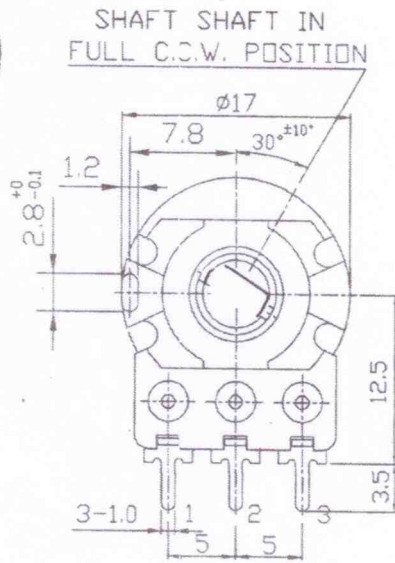
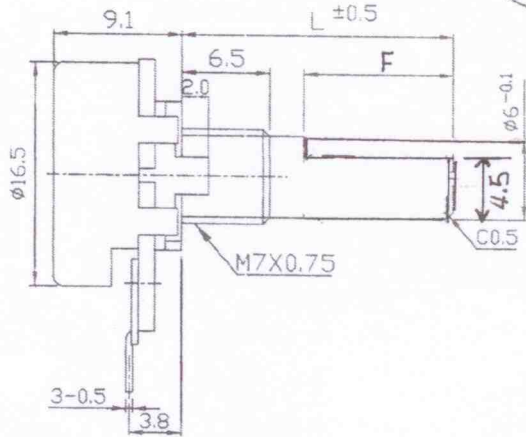
9F, NO. 1221, Chung Cheng Rd., Taoyuan, Taiwan

TEL:886-3-3577799 FAX:886-3-3577700

E-mail:sales@taiwanalpha.com.tw

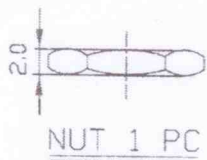
URL:http://www.taiwanalpha.com

文管中心
2016.08.09
發行章



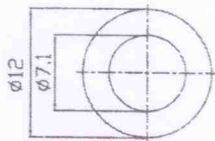
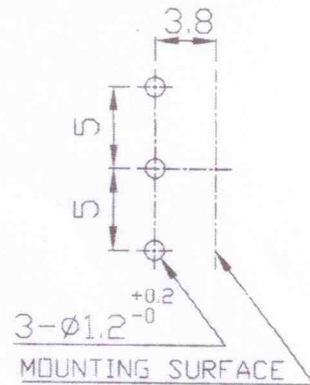
	L	F
	10	2.5
✓	15	7
	20	12

Mounting Hole Detail
(Viewpoint of Shaft)

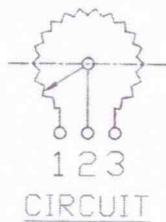


NUT 1 PC

● 300° ROTATION
MONO UNIT



WASHER 1 PC t=0.4



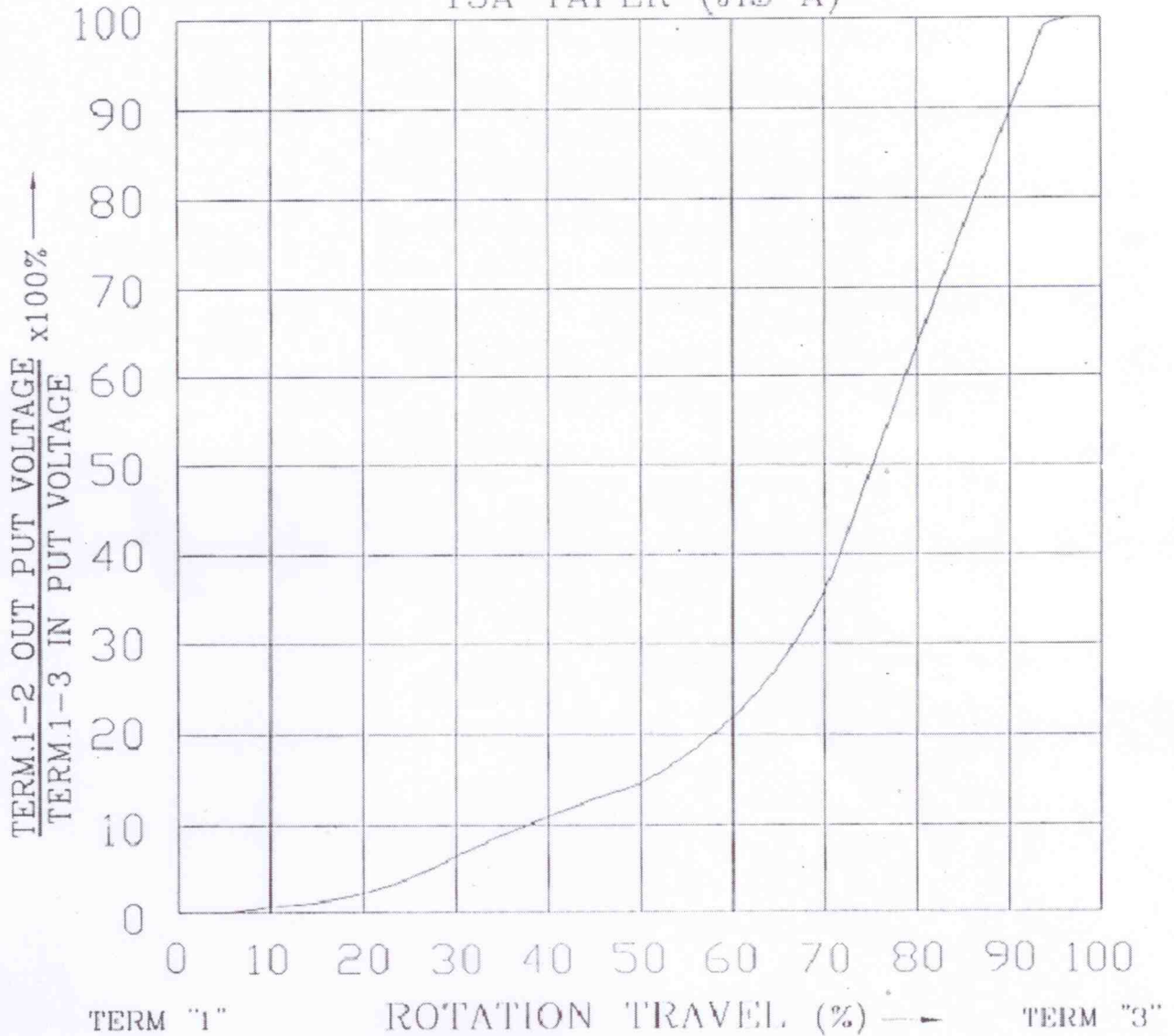
CIRCUIT

							-3LA
							-3C97A -3078B
							-3X -304
							RV16AF-20-(L)F-XXX-3 -30H4

NO.	DATE	DESCRIPTION	MODEL NAME				DRAWING NO.
TOL. UNLESS OTHERWISE STATED		DIMENSION	SCALE	DRAWN BY	CHECKED BY	APPROVED BY	
less than	10	±0.3	2 / 1	姚 2016.8.04 榕偉		章 2016.8.04 祖衛	
above	10 ~ 30	±0.5					
above	30 ~ 100	±1.0					
above		±5°					

STANDARD RESISTANCE TAPER

15A TAPER (JIS A)



NO.	DATE	DESCRIPTION	MODEL NAME			
TOL. UNLESS OTHERWISE STATED	DIMENSION	SCALE	DRAWN BY	CHECKED BY	APPROVED BY	DRAWING NO.
less than 10	±0.3		 90.8.21	 90.8.21	 90.8.21	
above 10 ~ 30	±0.5	mm				
above 30 ~ 100	±1.0					
above	±5					

