

RoHS COMPLIANT

REV	ECN NO.	DESCRIPTION	DATE
A		RELEASE	JUN. 07' 10

9,15,25,37 POSITIONS

50 POSITIONS

Material

Insulator: Glass-Filled Thermoplastic PBT,UL94V-0
 *Color Option:K=Black,B=Blue,W=White

Contact: Copper alloy

Shell: Steel,100u" Tin Over 50u" min Copper

Electrical

Contact Resistance: 20 milliohms Max at 1 AMP DC.

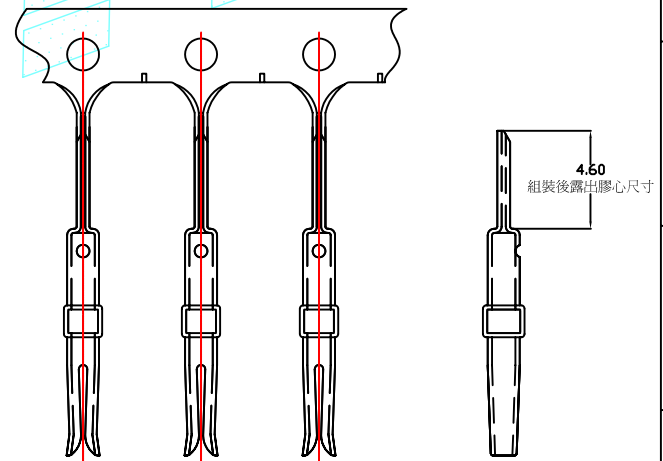
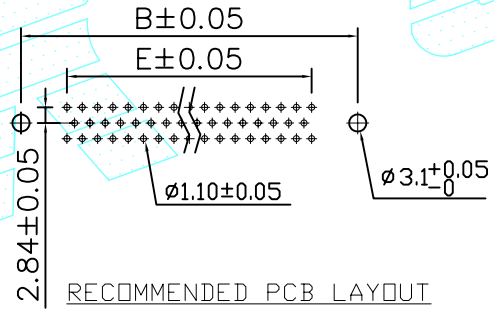
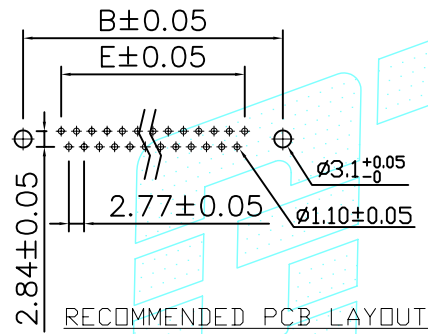
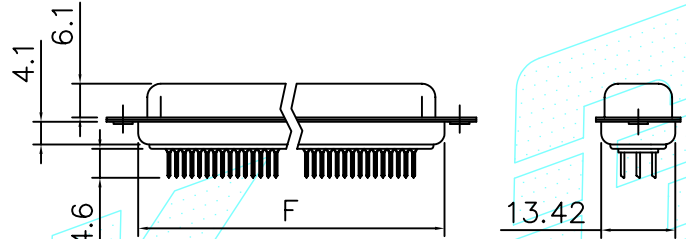
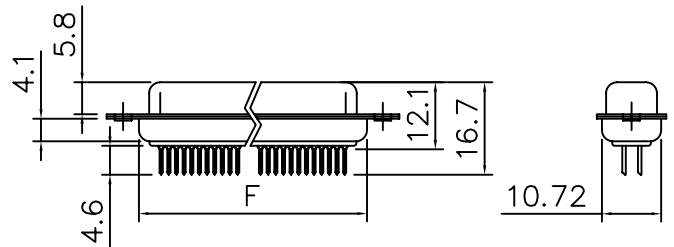
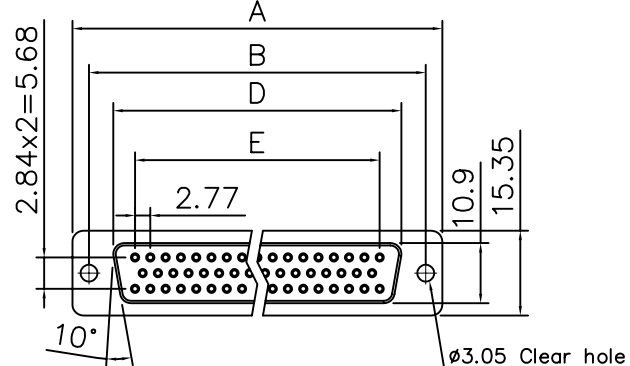
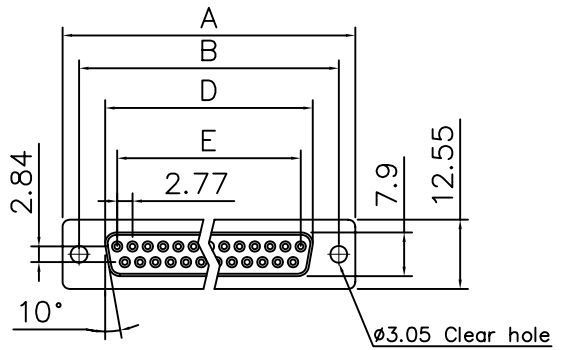
Insulation Resistance: 1000 megohms at 500 VDC

Dielectric Withstanding Voltage: 1000 VAC/rms 60Hz for 1 minute

Current Rating: 3 AMP

Volatge Rating: 250 VAC/rms 60Hz

Terminal



DIMENSION TABLE

POS	GTK P/N	A±0.15	B±0.10	D±0.13	E±0.08	F±0.10
9	DES09ST*2NS/RH	30.81	24.99	16.33	11.08	19.20
15	DAS15ST*2NS/RH	39.20	33.30	24.70	19.39	27.70
25	DBS25ST*2NS/RH	53.05	47.04	38.40	33.24	41.10
37	DCS37ST*2NS/RH	69.40	63.50	54.80	49.86	57.30
50	DDS50ST*2NS/RH	67.00	61.00	52.20	44.32	55.10

TOLERANCE UNLESS OTHERWISE SPECIFIED			PROJECTION
LINEAR		ANGLE	UNITS
X. ± 0.50	X° ±		
.X ± 0.38	.X° ±		MM
.XX ± 0.25	.XX° ±		
.XXX ±	.XXX° ±		SCALE
APPD			SIZE
CHKD			
DRAW	Z	JUN. 07' 2010	

GTK GOLD-TEK ELECTRIC CO., LTD.

TITLE	PART NO.
D-SUB DIP FEMALE STRAIGHT TYPE	D*S**ST*2NS/RH
CAD NO. I268	SHEET
F:\DRW\DSUB\DSUB-0185	1 OF 1

圖面編號:GTKSD2811-A(1)