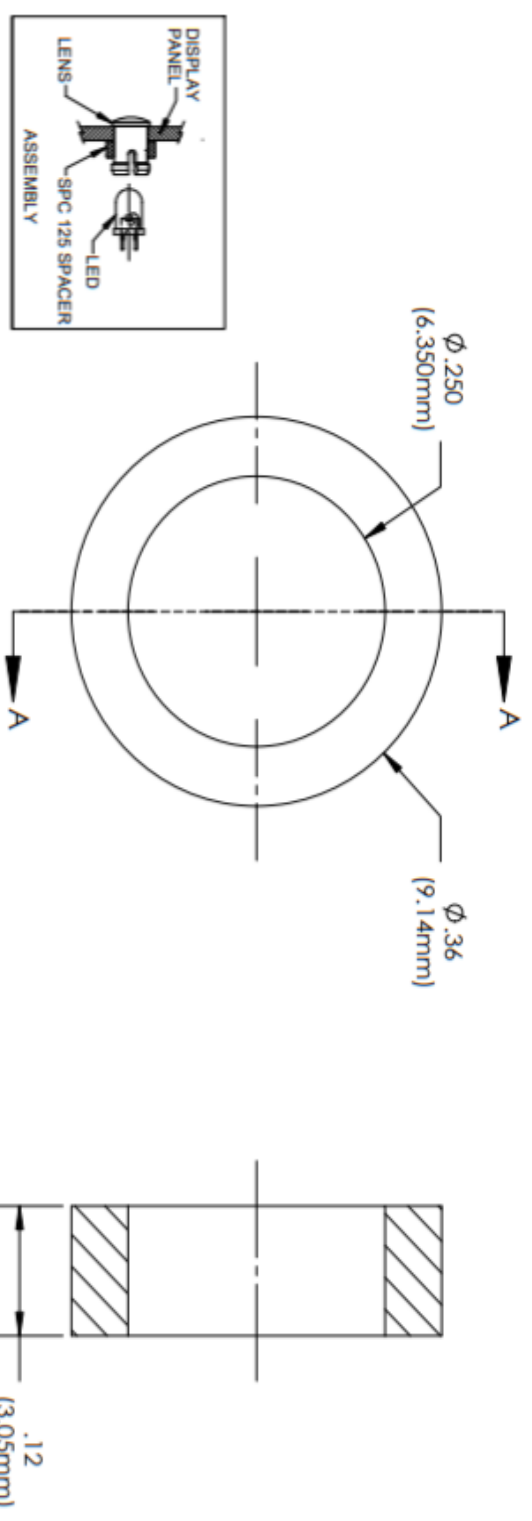


**NOTES:**  
1) U.S. & Foreign Pat. Issued & Pend.

REVISIONS				
ECN #	REV	DESCRIPTION	DATE	INITIALS
	N/A	INITIAL RELEASE	11/1/85	JS
	1	UPDATE DRAWING FORMAT MATERIAL	9/12/08	JS
	001	REVISED PER ECR111009AZ01	2/12/10	KH



ISOMETRIC VIEW

UNLESS OTHERWISE SPECIFIED DIMENSIONS ARE IN INCHES ANGLES DECIMALS & T XX 1/10 FINISH .XXX ± .005 VISUAL COMMUNICATIONS COMPANY VISUAL COMMUNICATIONS COMPANY VISUAL COMMUNICATIONS COMPANY		MATERIAL <b>POLYPROPYLENE</b> UL 94-HB		TITLE: <b>CLIPLETE SPACER SPC 125</b>	
FINISH SEE NOTES		APPROVALS DRAWN K.Howard CHECKED DPZ DATE 2/12/10 DATE 2/22/10		DWG. NO. <b>SPC 125</b>	
THIRD ANGLE PROJECTION DIMENSIONS ARE IN INCHES THE DIMENSIONS SHOWN ON THIS DRAWING ARE THE DIMENSIONS OF THE PART AS MANUFACTURED TO THE TOLERANCES AND FINISHES SPECIFIED THEREON.		VISUAL COMMUNICATIONS COMPANY 190 Boretech Boulevard, Suite 101, San Marcos, CA 92069 USA Phone (760) 560-1300 Fax (760) 560-1301 email vccsales@vccllite.com		REV <b>001</b>	
DO NOT SCALE DRAWING		SCALE: 6:1		SHEET 1 OF 1	

5 4 3 2 1

# CLIPLITE®

## VISUAL COMMUNICATIONS COMPANY, INC.

7920-F Arjons Dr., San Diego, CA 92126  
 In CA (858) 549-6900 (800) 522-5546  
 FAX (858) 549-3520 www.vcclite.com

### LENSE MOUNTS FOR 3mm & 5mm LEDs



U.S. & Foreign Pat. Pend.

#### SPECIFICATIONS

**MATERIAL:** Lens - Polycarbonate; Spacer - Polypropylene. (U.L. Listed Materials).

**DESIGN:** Standard and low profile lenses with fresnel rings and striated lines. CLR 301 Low Profile Lens is available without fresnel rings.

**MOUNTING:** Mounts thru front of panel. Mounting holes should be deburred but not chamfered.  
 3mm (SML 190, SMB 200) mounts in a  $.171 \pm .002$  (4.34mm) hole on 1/4" centers. Panel thickness for SML 190, 1/32" to 1/16"; SMB 200, 1/16" to 1/8". 5mm (CLF 280, CLB 300, CLR 301) mounts in a  $.250 \pm .002$  (6.35mm) hole on 3/8" centers. Panel thickness for CLF 280, 1/16" to 1/8"; CLB 300 and CLR 301, 1/32" to 1/4"; for panels less than 3/16", use SPC 125 spacer. Lens retaining ring - available for added security (RNG 190, 3mm & RNG 268, 5mm)

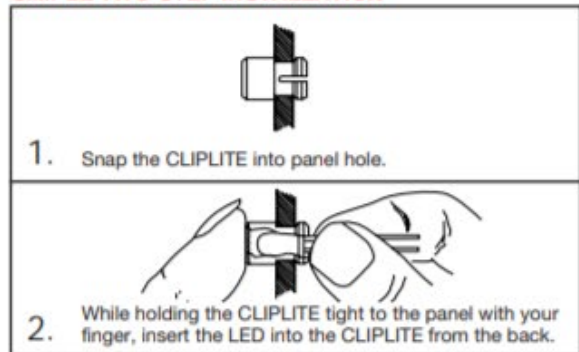
**VISIBILITY** - CLIPLITE produces up to 180 degrees of viewing angle using standard 3mm and 5mm LEDs.

**BRIGHTNESS** - CLIPLITE utilizes striated lines and fresnel rings to increase apparent brightness up to 125% and viewing angle up to 180 degrees with either diffused or nondiffused LEDs. A low profile lens without rings or lines is available for direct sunlight applications.

**PROTECTION** - CLIPLITE helps prevent IC failures caused by electrostatic discharge (ESD). Simply walking across a carpet can generate 10,000 volts. Introduction of this ESD thru an exposed panel mounted LED is capable of damaging or destroying a semiconductor. A CLIPLITE mounted LED helps guard components from ESD up to 16 kv while affording the LED physical protection.

**INSTALLATION** - CLIPLITE, standard or low profile, requires no assembly tools; just snap into a panel opening and insert LED. Cost effective operation is complete in only 6 seconds.

#### SIMPLE TWO-STEP INSTALLATION



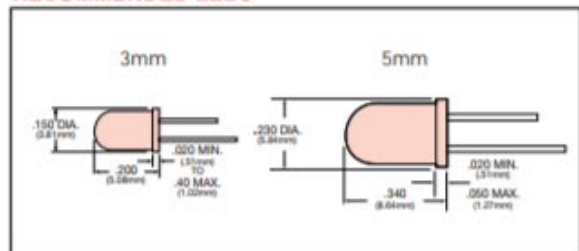
#### ORDERING CODES

##### CLF 280 RTP

MODEL \_\_\_\_\_ COLOR \_\_\_\_\_

SML 190 (3mm) Std. Hgt.	RTP Red Transparent
SMB 200 (3mm) L/Profile	ATP Amber Transparent
CLF 280 (5mm) Std. Hgt.	GTP Green Transparent
CLB 300 (5mm) L/Profile	BTP Blue Transparent
CLR 301 (5mm) L/P Plain	YTP Yellow Transparent
SPC 125 (Spacer for CLB 300 and CLR 301)	CTP Clear Transparent

#### RECOMMENDED LEDs



#### OUTLINE DRAWINGS

