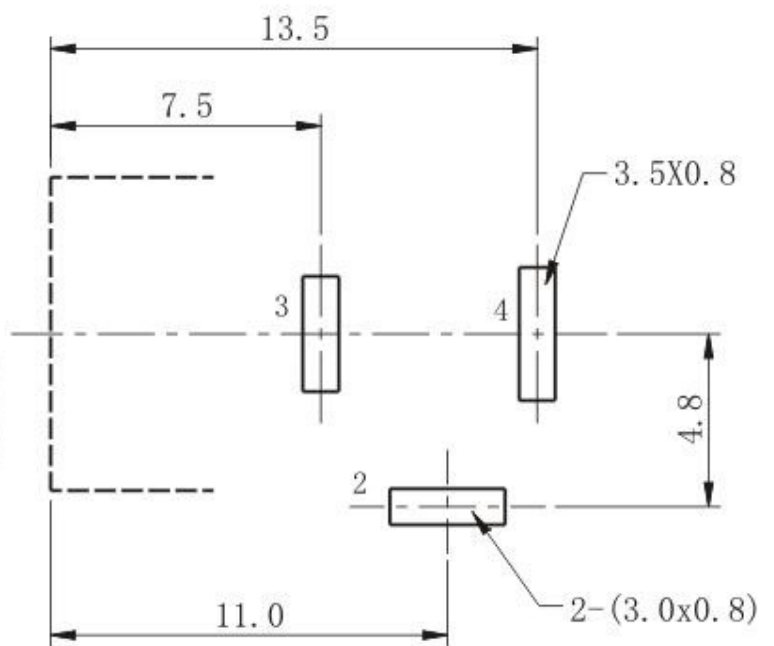
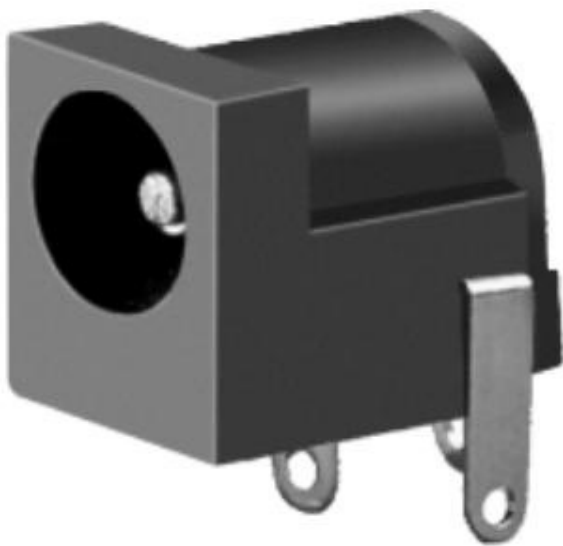
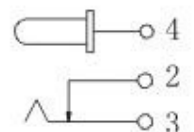


P. C. B LAYOUT TOP VIEW



PIN	$\phi 2.0$	$\phi 2.5$
APPD		



温度范围 Temperature;	-40~70℃	耐压 Withstand Voltage;	AC500V(50Hz)/min
额定负荷 Rated Load;	DC 50V 0.2A	插拔力 Insertion and Extraction Force;	3~20N
接触电阻 Contact Resistance;	<0.03Ω	寿命 Life;	>10000次
绝缘电阻 Insulation Resistance;	> 100MΩ		