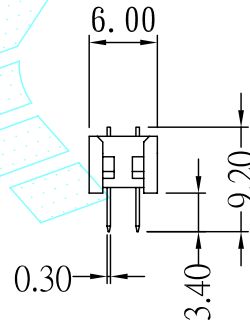
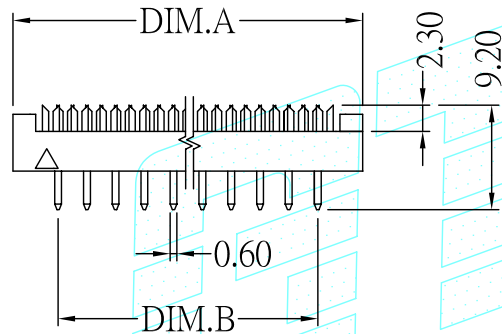
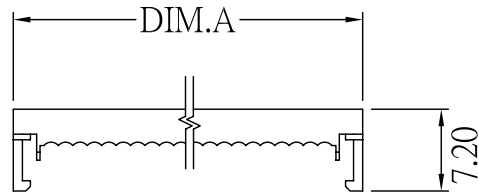
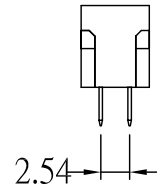
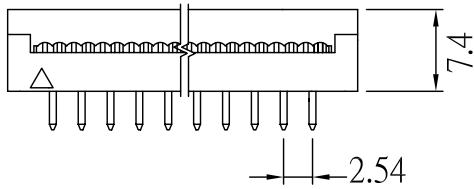


RoHS COMPLIANT

REV	ECN NO.	DESCRIPTION	DATE
A	GTKSD0616	RELEASE	FEB. 06. 01
B		MODIFY PART_NO	OCT. 01. 02
C		ADD. SPEC & DIM	MAR. 25' 05
D		ADD. RoHS	JAN. 25' 07

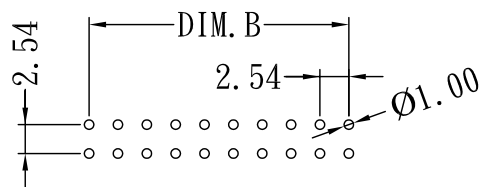
MATERIALS:
 INSULATOR: P. B. T. 30%GLASS FIBER, UL94V-0
 COLOR: BLACK(STANDARD) OR GR=GRAY
 CONTACTS: BRASS OR PHOSPHOR BRONZE, G=GOLD FLASH OVER NICKEL
 T=TIN PLATED

ELECTRICAL:
 CURRENT RATING: 1AMP.
 INSULATION RESISTANCE: 1000MΩ MIN.
 DIELECTRIC WITHSTANDING: 500VAC
 OPERATING TEMPERATURE: -55°C ~ +105°C



CONTACTS	DIM. A	DIM. B
06	12.94	5.08
08	15.48	7.62
10	18.10	10.16
12	20.51	12.70
14	23.05	15.24
16	25.64	17.78
18	28.15	20.32
20	30.78	22.86
24	35.86	27.94
26	38.40	30.48
28	40.60	33.02
30	43.50	35.56
34	48.58	40.64
40	56.20	48.26
50	69.00	60.96
60	81.75	73.66
64	86.83	78.74

Recommended P. C. Board Hole Layout



TOLERANCE UNLESS OTHERWISE SPECIFIED		PROJECTION	GOLD-TEK ELECTRIC CO., LTD.	
LINEAR	ANGLE			TITLE DIP PLUG CONNECTOR ROW TO ROW: 2.54mm PITCH: 2.54mm
X. ±	X° ±			
.X ± 0.25	.X° ±	UNITS	PART NO. DP**TN(G)11 (/GR) /RH	CAD NO. 1104 F:\Drw\PH\PH-0048
.XX ± 0.15	.XX° ±	MM		
.XXX±	.XXX° ±	SCALE	IPART NO	SHEET 1 OF 1
APPD		SIZE		
CHKD		A4	<div style="border: 2px solid blue; padding: 5px; color: blue; font-weight: bold;">圖面編號:GTKSD0616-D(1)</div>	
DRAW	Z.	JAN. 25' 2007		