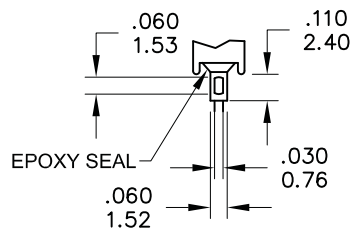


PANEL MOUNTING



SOLDER LUG

Model No.	POS.1	POS.2	POS.3
2MS6	OFF	NONE	NO
Term. Comm.	OPEN		3-1
SCHEMATIC	N/A		

SWITCH FUNCTION

	PART NO.	PART NAME	Q'TY
1	MNU-2M01	10-48 INCH NUTS	2
2	MNU-2M03	LOCKWASHER	1

FILE NAME:HARDWARE-0003

**SPECIFICATIONS**

**MECHANICAL LIFE:** 30,000 make-and-break cycles.  
**CONTACT RESISTANCE:** 20mΩ max. initial @ 2-4VDC  
 100mA for both silver and gold plated contacts.  
**INSULATION RESISTANCE:** 1,000MΩ min.  
**DIELECTRIC STRENGTH:** 1,000 V RMS@sea level.  
**OPERATING TEMPERATURE:** -30°C to 85°C.

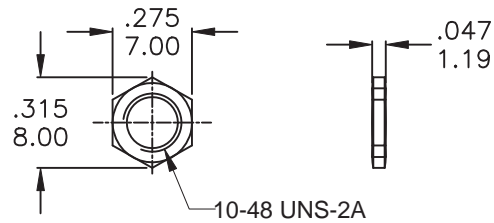
**MATERIALS**

**CASE** - Diallyl phthalate(DAP)( UL94V-0 )  
**ACTUATOR** - Brass,chrome plated  
**BUSHING** - Brass,nickel plated  
**HOUSING** - Stainless Steel  
**SWITCH SUPPORT** - Brass,tin plated.  
**TERMINALS/CONTACT** - Brass, with Silver or gold plated.  
 RoHS -2002/95/EC

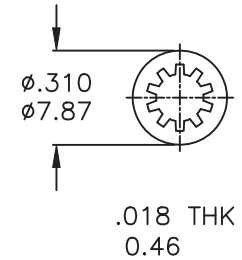
	CONTACT MATERIAL	TERMINAL PLATING	RATINGS
Q	Silver	Q = Silver	3 Amps @120 VAC or 28 VDC 1 Amp @250VAC
S		S = Silver,pure-tin	
C	Gold over Silver	C = Gold over silver	
K		K = Gold over silver,pure-tin	
R	Gold	R = Gold	0.4 Volt-Amps(VA) max. @20V max. (AC or DC)
G		G = Gold,pure-tin	

**东莞市创恩电子有限公司**

	符號	原尺寸	修改後尺寸	變更日期	SCALE (比例): 3:2	TITLE 圖名	Sub - Miniature Toggle Switches	SIZE 圖紙	A4		
1	(A)				TOLERANCE (公差): 0.00 mm ± 0.25mm 0.0 mm ± 0.40mm ANGULAR : ± 5° FILE NAME : 2MSP0573	DWG NO. 圖號	2MS6T1B1M1QES-5	UNIT 單位	inch mm		
2	(B)					REV. 版本	A	DATE 日期	FEB - 05 - 2009	SHEET 張數	1 of 1
3	(C)					CHECKED BY 審核	RICHARD		DRAWN BY 製圖	IRENE	
4	(D)										
5	(E)										



Ⓐ MNU-2M01



MNU-2M03

	PART NO.	PART NAME	Q'TY
1	MNU-2M01	10-48 INCH NUTS	2
2	MNU-2M03	LOCKING WASHER	1

## 东莞市创恩电子有限公司

符號	原尺寸	修改後尺寸	變更日期	SCALE (比例) : 3 : 2	TITLE 圖名	HARDWARE		SIZE 圖紙	A4	
1	Ⓐ	修正NU-2M01物料尺寸參照NU-2M01(C)	JAN-07-2013	TOLERANCE (公差) : 0.00 mm ± 0.25mm 0.0 mm ± 0.40mm ANGULAR : ± 5° FILE NAME : HARDWARE-0003	DWG NO. 圖號	10-48 IN BUSHING PART		UNIT 單位	inch mm	
2	Ⓑ				REV. 版本	B	DATE 日期	DEC - 27 - 2007	SHEET 張數	1 of 1
3	Ⓒ				CHECKED BY 審核	RICHARD		DRAWN BY 製圖	FION	
4	Ⓓ									
5	Ⓔ									