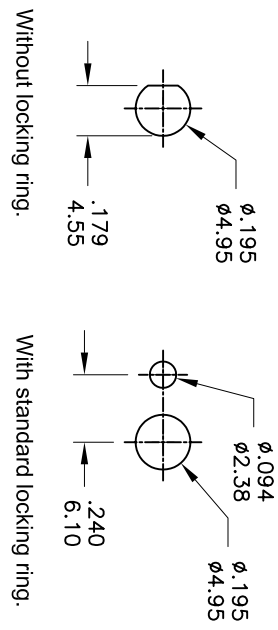
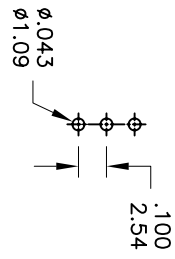


Model No.	POS. 1	POS. 2	POS. 3
	2MS1	ON	NONE
Term. Comm.	2-3	OPEN	2-1
SCHEMATIC			

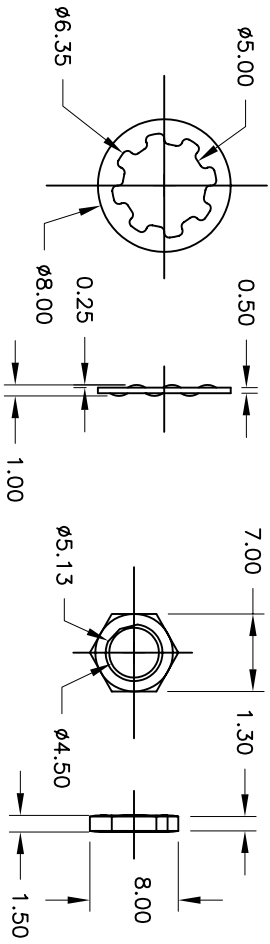
SWITCH FUNCTION



PANEL MOUNTING



P.C. MOUNTING



SPECIFICATIONS

MECHANICAL LIFE: 30,000 make-and-break cycles.
CONTACT RESISTANCE: 20mΩ max. initial @ 2-4VDC
 100mA for both silver and gold plated contacts.
INSULATION RESISTANCE: 1,000MΩ/min.
DIELECTRIC STRENGTH: 1,000 V RMS@sea level.
OPERATING TEMPERATURE: -30° C to 85° C.

MATERIALS

CASE - Diallyl phthalate(DAPY) UL94V-0)
ACTUATOR - Brass,chrome plated
BUSHING - Brass,nickel plated
HOUSING - Stainless Steel
SWITCH SUPPORT - Brass,tin plated.
TERMINALS/CONTACT - Brass, with Silver or gold plated.

RATING :

R : 0.4 Volt-Amps(VA) max. @20V max.(AC or DC)
 Q : 1Amp @250VAC
 3Amps @120 VAC or 28 VDC

东莞市创恩电子有限公司

符号	原尺寸	修改後尺寸	變更日期	SCALE (比例) : 3 : 2	TITLE	Sub - Miniature Toggle Switches	SIZE	
1	(A)			TOLERANCE (公差) : 0.00 mm ± 0.25mm 0.0 mm ± 0.40mm ANGULAR : ±5° FILE NAME : 2MSP0357	DWG NO.	2MS1T1B1M2QES	圖紙	
2	(B)				REV.	A	DATE	SEP - 20 - 2006
3	(C)				ANGULAR	±5°	CHECKED BY	RICHARD
4	(D)				FILE NAME	2MSP0357	審核	RICHARD
5	(E)						DRAWN BY	製圖
							BLUE	