

CUSTOMER'S NAME

員享

ALPHA REFERENCE NO.




SP04101051

SPECIFICATION

PART NO.	ALPHA MODEL NAME
1.	RV24A01-10-15K-B500K

MODEL NAME
MODEL NO.

APPROVAL

PREPARED BY	REVIEWED BY	APPROVED BY
 93.10.26 蔡香鑾	 93.10.26 何建志	 93.10.26 何建志

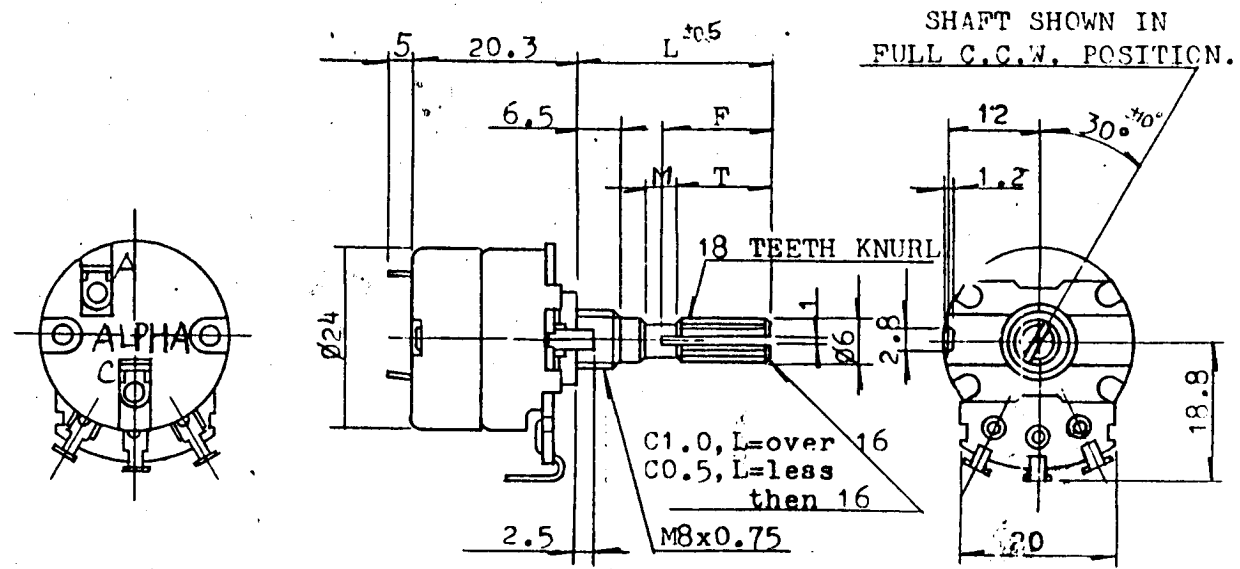


台灣艾華電子工業股份有限公司
桃園市中正路1221~1223號9樓

TAIWAN ALPHA ELECTRONIC CO., LTD.
9F, NO. 1221, Chung Cheng Rd., Taoyuan, Taiwan R.O.C.
TEL:886-3-3577799 FAX:886-3-3577700
E-mail:sales@taiwanalpha.com.tw
URL:http://www.taiwanalpha.com

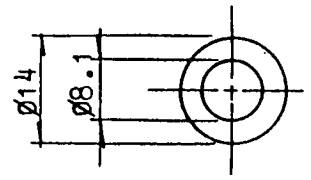
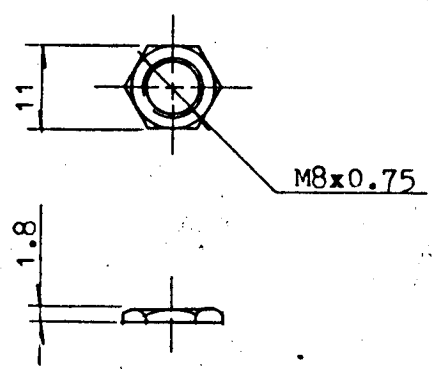
SLH-008-20

THIRD ANGLE PROJECTION



NUT 1 PC.

WASHER 2 PCS.



t=0.4



						RV24A01-10-K			
						V24A(02D)S		KQ	
No.	DATE	DESCRIPTION		PART No.		NAME		NOTE	
TOL UNLESS OTHERWISE STATED		DIMENSION	SCALE	DRAWN BY	CHECKED BY	APPROVED BY		DRAWING No.	
less than	10	±0.3	1/1	S. C. CHU	C. S. HONG	F. C. WILL		1104#03	
above	10~30	±0.5							
above	30~100	±1.0							
ANGLE									
				Nov 15 '90		JAN 3 '90		JAN 4 '90	

CUSTOMER'S NAME	NOTE	DATE
CUSTOMER'S PART NAME		
CUSTOMER'S DRAWING NO.		OCT. 26. 2004

1. MECHANICAL SPECIFICATION

1. OUTSIDE DIMENSION	append fig.	
2. TOTAL ROTATION ANGLE	degree	300 ±5°
3. TOTAL TRAVEL STROKE	mm	±0.5
4. NUT WRING STRENGTH	twisting moment	less than 9 kg.cm
5. SCREW TIGHTENING FORCE	torsional moment	less than 9 kg.cm
6. ROTATION TORQUE	speed 60 deg/sec.	20-200 g.cm
7. SLIDING FORCE	speed 20 mm/sec.	g.cm
8. SHAFT LEVER STRENGTH	pulling pushing	more than kg
9. SHAFT LEVER WOBBLE	within mm (bending moment)	g.cm
10. SHAFT LEVER STOP STRENGTH	more than 6 kg.cm (static load)/ more than 500 g.cm/10±1sec	60 sec
11. TERMINAL STRENGTH	soldering heat 300±5°C/3sec. 200g.cm/10±1 sec. resist change within ±2%	
12. CLICK POSITION & TORQUE	g.cm	
13. SWITCH WORKING ANGLE (STROKE)	degree (mm)	50 ± 10
14. SWITCH WORKING TORQUE (FORCE)	g.cm	150-450
15. SWITCH CIRCUIT		S.P.S.T.

2. ELECTRICAL SPECIFICATION

1. OVERALL RESISTANCE & TOLERANCE	terminal 1-3	500K Ω ± 20 %
2. TAP RESISTANCE & TOLERANCE	terminal 1-4	Ω ± %
3. RATED WATTAGE	temp. 0~50°C	0.5 W
4. MAXIMUM WORKING VOLTAGE		5.00 V
5. RESISTANCE TAPER MEASURING POINT & TOLERANCE		B 40 ~ 50 %point 60 %
6. RESIDUAL RESISTANCE	terminal 1 / 3 side	less than 20 / 20Ω
7. TAP RESIDUAL RESISTANCE	terminal 4 side	less than 100Ω
8. SLIDE NOISE		less than 47 mV
9. INSULATION RESISTANCE	more than	100MΩ (DC 500 V)
10. WITHSTAND VOLTAGE:	AC 5.00 V	1 minute
11. TRACKING ERROR		
12. SWITCH CONTACT RESISTANCE	mΩ	less than 50 mΩ
13. SWITCH RATING		AC125V, 1A

3. USABLE TEMPERATURE. RANGE: from -10°C to 70°C

4. VR LIFE 15,000 ± TIMES

RESISTANCE CHANGE: within ± %

SLIDE NOISE: Less than mV

SW LIFE 10,000 ± TIMES

CONTACT RESISTANCE: less than mΩ

SHAFT

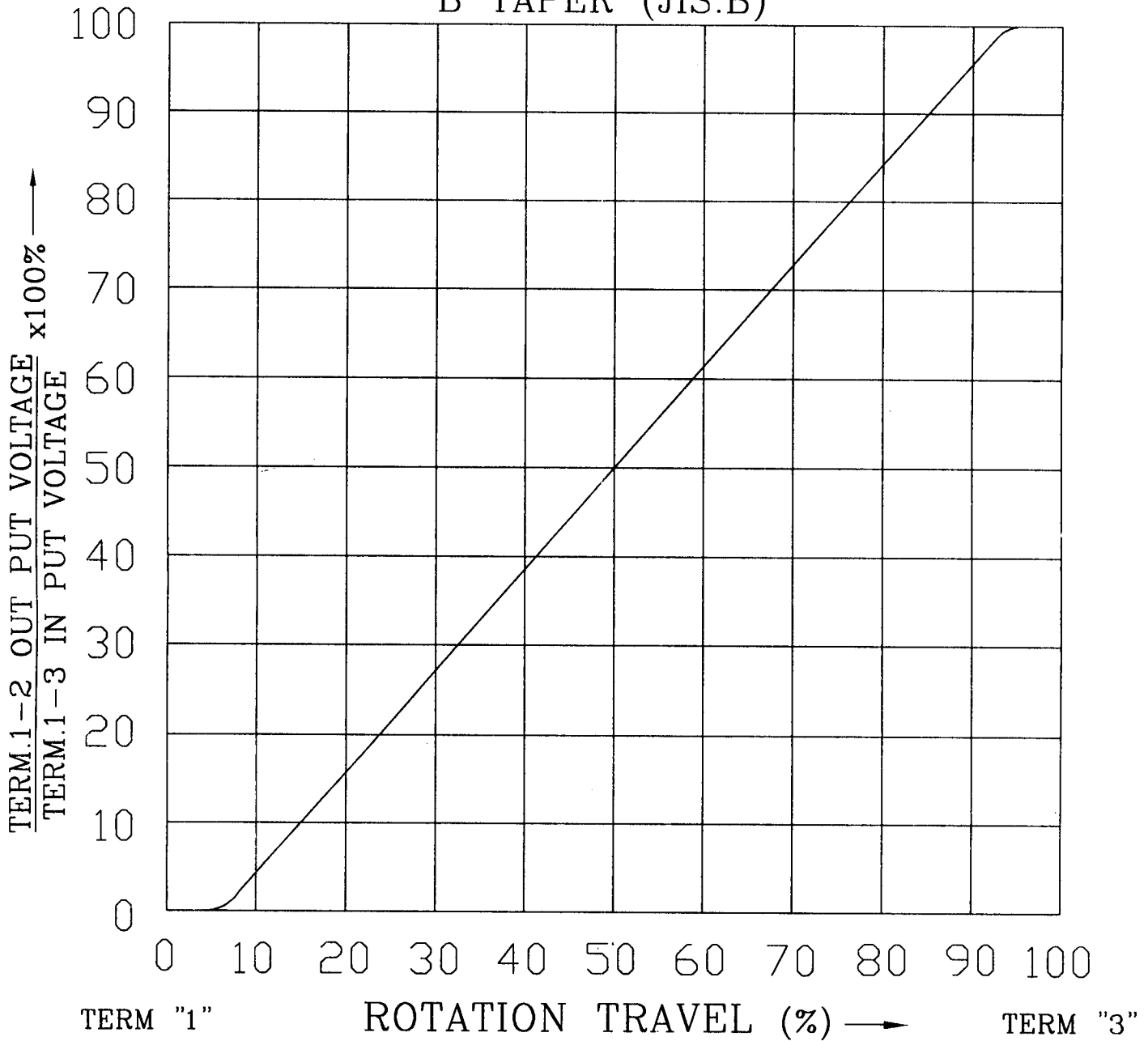
MATERIAL	ANGLE OF FLAT OR SLOT θ	DIMENSION		
		M	L	F
ALUMINUM	at	1	15	6.5
				6

MODEL NAME	DRAWING NO.
RV24A01-10-15K-B500K	

PREPARED BY	REVIEWED BY	APPROVED BY	REFERENCE NO.	REV.
蔡香鑾	何建志	何建志	SP04101051	

STANDARD RESISTANCE TAPER

B TAPER (JIS:B)



NO.		DATE		DESCRIPTION		MODEL NAME	
TOL. UNLESS OTHERWISE STATED		DIMENSION	SCALE	DRAWN BY	CHECKED BY	APPROVED BY	DRAWING NO.
less than 10 ±0.3		mm		何 90.8.21 建志	王 90.8.21 茂松	王 90.8.21 茂松	
above 10 ~ 30 ±0.5							
above 30 ~ 100 ±1.0							
above ±5°							

Common Specification of Variable Resistor

VR 共通規格書

1 Condition of soldering

銲錫條件

Soldering shall be certified with following condition.

作銲錫處理時，請確保在下列工作條件。

1-1 Substrate to be soldered: Copper clad laminated phenol board in one surface of 1.6mm thickness.

使用基板：t 1.6 厚單面銅箔積層板。

1-2 Solder Flux: Flux of 0.82 specific weight in bubbling type solder flux coating apparatus shall be used and bubbling surface height shall be defined substantially as half thickness of substrate. Flux shall not flow up on the substrate surface.

助銲劑：使用發泡式比重 0.82 以上的銲劑，發泡面高大致在基板厚度一半的位置，而助銲劑不可流入基板表面上。

1-3 Preheating: Surface temperature of the substrate shall be settled within 100°C in two minutes.

預熱：基板表面溫度 100°C 以下，2 分鐘以內。

1-4 Soldering: To be performed in three seconds within 260°C.

銲錫：260°C 以下，3 秒以內。

Please use the above process only one or two times.

以上工程 1 回或 2 回通過即可。