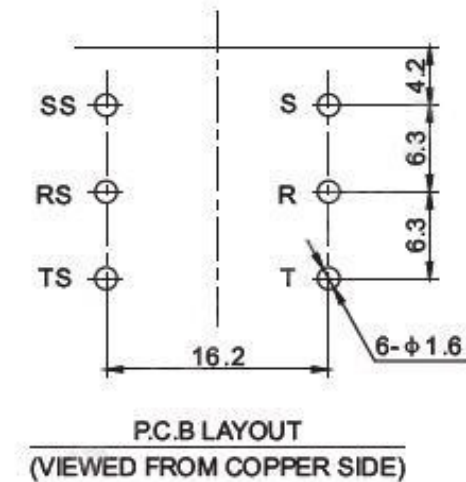
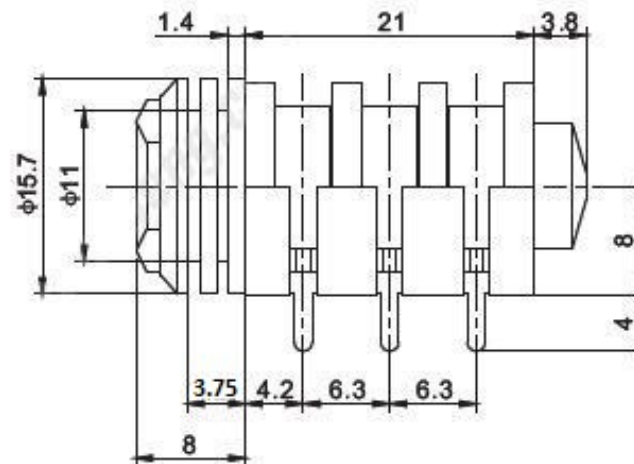
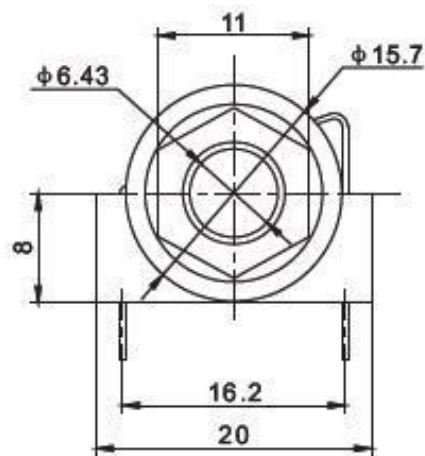


Contact Resistance	$\leq 0.03\Omega$
Insulation Resistance	$\geq 100M\Omega$
Withstand Voltage	500V,AC/min
Temperature Range	-25~70℃
Rated Load	DC 50V 0.5A
Insertion and Extaction Force	5-40N
Terminal Strength	$\geq 10N$
Life	5000 times



Dimension in mm



metal nut



arch washer



flat round washer

